

EFFETRE CANE *(Moretti)*

Effetre cane is available in 120 different colors. Each cane weighs approx 0.15 lbs and is approximately 40" long. We carry the cane in 5-6mm diameters. Certain cane is available in 6-7mm and 7-8mm diameters. Colors 069, 076, 456, 532, and 536 are striking colors. The COE is 104 x 10⁻⁷. We recommend testing all colors to ensure compatibility with YOUR base glass and YOUR particular process. **All Effetre cane, Murano cane, Lauscha cane & Satake cane MAY BE MIXED FOR QUANTITY DISCOUNTS.** A note about part numbers: "-915" at the end of the part number means 5-6mm glass. If you wish to order 6-7mm, please order the "-916" suffix, for 7-8mm glass order -917, etc. The COE is in the 104 range. One case of Effetre is 22 lbs., 1 color, 1 style, 1 diameter. A note about compatibility. As with many types of glass, Effetre glass has a range of COE's. All Effetre colors are generally compatible with each other, even opalino and alabaster colors. This may be contrary to what many people believe. Both opalino and alabaster colors can be used with other colors in a "normal" bead PROVIDED IT IS FLAME ANNEALED PROPERLY AND PUT IN AN ANNEALER WHICH IS SET TO THE CORRECT TEMPERATURE IMMEDIATELY. If you experience problems, chances are that one or the other items listed above was not followed correctly. See pg 9 & 10 for more compatibility information. Color charts may be viewed on our web page at CRLOO.COM

NO MINIMUM ORDER FOR RODS.

We have arranged each color in the list below from Light to Dark. The lightest colors are on the top of the list and the darker colors are on the bottom. This a general guide for selection only. It can be helpful in choosing colors when, for example, you want to know whether a particular color is lighter or darker than another color - just look above or below the color, the one on top is generally LIGHTER and the one below is generally DARKER.

Numbers	Numbers	Legend	Temperature					
0000 = Transparent	0400 = Special	Opaque = Pastel & Special	Annealing Temp 920°F-968°F					
0200 = Pastel	0500 = Opaline	Transparent = Transparent	Strain Point 840°F					
0300 = Alabaster		Translucent = Alabaster & Opaline	Softening Point 1200°F					

CODE	ITEM	BASE	5+	Price per Pound					SOLID CASE
				10+	20+	30+	40+		
CLEAR									
0004-912	Clear 2-3mm	7.90	7.11	6.48	6.32	6.16	5.93	5.85	
0004-913	Clear 3-4mm	7.90	7.11	6.48	6.32	6.16	5.93	5.85	
0004-915	Clear 5-6mm	7.90	7.11	6.48	6.32	6.16	5.93	5.85	
0004-916	Clear 6-7mm	7.90	7.11	6.48	6.32	6.16	5.93	5.85	
0004-917	Clear 7-8mm	7.90	7.11	6.48	6.32	6.16	5.93	5.85	
0004-918	Clear 8-9mm	7.90	7.11	6.48	6.32	6.16	5.93	5.85	
0004-919	Clear 9-10mm	7.90	7.11	6.48	6.32	6.16	5.93	5.85	
0004-9110	Clear 10-11mm	7.90	7.11	6.48	6.32	6.16	5.93	5.85	
0004-9111	Clear 11-12mm	7.90	7.11	6.48	6.32	6.16	5.93	5.85	
0004-9112	Clear 12-13mm	7.90	7.11	6.48	6.32	6.16	5.93	5.85	
0004-9113	Clear 13-14mm	7.90	7.11	6.48	6.32	6.16	5.93	5.85	
0004-9114	Clear 14-15mm	7.90	7.11	6.48	6.32	6.16	5.93	5.85	
0004-9115	Clear 15-16mm	7.90	7.11	6.48	6.32	6.16	5.93	5.85	
0004-9130	Clear 30mm+	15.50	13.95	12.71	12.40	12.09	11.63	11.47	
BLACK TRANSPARENT									
0064-915	Black	7.90	7.11	6.48	6.32	6.16	5.93	5.85	
GREY OPAQUE									
0268-915	Pearl Grey	8.60	7.74	7.05	6.88	6.71	6.45	6.36	
0248-915	Light Grey	8.60	7.74	7.05	6.88	6.71	6.45	6.36	
0252-915	Dark Grey	8.60	7.74	7.05	6.88	6.71	6.45	6.36	
GREY TRANSPARENT									
0048-915	Pale Grey	7.90	7.11	6.48	6.32	6.16	5.93	5.85	
0084-915	Light Grey	7.90	7.11	6.48	6.32	6.16	5.93	5.85	
0088-915	Dark Grey	7.90	7.11	6.48	6.32	6.16	5.93	5.85	
WHITE OPAQUE									
0204-915	White	8.60	7.74	7.05	6.88	6.71	6.45	6.36	
0208-915	Ivory White	8.60	7.74	7.05	6.88	6.71	6.45	6.36	

* New Color Colors within each group are listed from light to dark.

EFFETRE (continued)

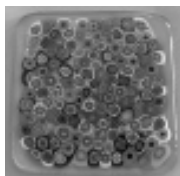
CODE	ITEM	BASE	5+	Price per Pound				SOLID CASE
				10+	20+	30+	40+	
WHITE TRANSLUCENT								
0504-915	White	8.60	7.74	7.05	6.88	6.71	6.45	6.36
0304-915	Light Opal White	8.60	7.74	7.05	6.88	6.71	6.45	6.36
0308-915	Light White	8.60	7.74	7.05	6.88	6.71	6.45	6.36
0312-915	Alabaster White	8.60	7.74	7.05	6.88	6.71	6.45	6.36
0316-915	Medium Opal White	8.60	7.74	7.05	6.88	6.71	6.45	6.36
BROWN OPAQUE								
0264-915	Light Beige	8.60	7.74	7.05	6.88	6.71	6.45	6.36
0276-915*	Dark Ivory	8.60	7.74	7.05	6.88	6.71	6.45	6.36
0444-915	Light Brown	9.85	8.87	8.08	7.88	7.68	7.39	7.29
0448-915	Dark Brown	9.85	8.87	8.08	7.88	7.68	7.39	7.29
0452-915	Reddish Brown	9.85	8.87	8.08	7.88	7.68	7.39	7.29
BROWN TRANSPARENT								
0008-915	Pale Amber	7.90	7.11	6.48	6.32	6.16	5.93	5.85
0012-915	Light Amber	7.90	7.11	6.48	6.32	6.16	5.93	5.85
0014-915	Medium Amber	7.90	7.11	6.48	6.32	6.16	5.93	5.85
0016-915	Dark Amber	7.90	7.11	6.48	6.32	6.16	5.93	5.85
BLUE-GREEN OPAQUE								
0232-915	Light Turquoise	8.60	7.74	7.05	6.88	6.71	6.45	6.36
0236-915	Dark Turquoise	8.60	7.74	7.05	6.88	6.71	6.45	6.36
0228-915	Dark Sky Blue	8.60	7.74	7.05	6.88	6.71	6.45	6.36
0218-915	Teal	8.60	7.74	7.05	6.88	6.71	6.45	6.36
BLUE-GREEN TRANSPARENT								
0026-915	Sea Green	7.90	7.11	6.48	6.32	6.16	5.93	5.85
0027-915	Dark Sea Green	16.80	15.12	13.78	13.44	13.10	12.60	12.43
BLUE OPAQUE								
0224-915	Sky Blue	8.60	7.74	7.05	6.88	6.71	6.45	6.36
0220-915	Opal Light Blue	8.60	7.74	7.05	6.88	6.71	6.45	6.36
0240-915	Medium Cobalt Blue	9.85	8.87	8.08	7.88	7.68	7.39	7.29
0242-915	Medium Lapis Blue	11.50	10.35	9.43	9.20	8.97	8.63	8.51
0246-915	Dark Lapis Blue	16.80	15.12	13.78	13.44	13.10	12.60	12.43
BLUE TRANSPARENT								
0038-915	Very Pale Aquamarine	7.90	7.11	6.48	6.32	6.16	5.93	5.85
0050-915	Pale Blue	7.90	7.11	6.48	6.32	6.16	5.93	5.85
0052-915	Light Blue	7.90	7.11	6.48	6.32	6.16	5.93	5.85
0054-915	Medium Blue	7.90	7.11	6.48	6.32	6.16	5.93	5.85
0056-915	Dark Blue	7.90	7.11	6.48	6.32	6.16	5.93	5.85
0034-915	Light Aquamarine	7.90	7.11	6.48	6.32	6.16	5.93	5.85
0036-915	Dark Aquamarine	7.90	7.11	6.48	6.32	6.16	5.93	5.85
0060-915	Cobalt Blue	7.90	7.11	6.48	6.32	6.16	5.93	5.85
BLUE TRANSLUCENT								
0524-915	Sky Blue	8.60	7.74	7.05	6.88	6.71	6.45	6.36
0348-915	Light Turquoise	8.60	7.74	7.05	6.88	6.71	6.45	6.36
0352-915	Medium Turquoise	8.60	7.74	7.05	6.88	6.71	6.45	6.36
0356-915	Dark Turquoise	8.60	7.74	7.05	6.88	6.71	6.45	6.36
0364-915	Dark Lilac	8.60	7.74	7.05	6.88	6.71	6.45	6.36
0368-915	Lapis	8.60	7.74	7.05	6.88	6.71	6.45	6.36
0384-915	Navy Blue	8.60	7.74	7.05	6.88	6.71	6.45	6.36

* New Color Colors within each group are listed from light to dark.

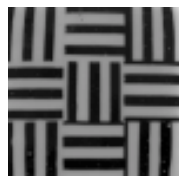
EFFETRE (continued)

CODE	ITEM	BASE	5+	Price per Pound				SOLID CASE
				10+	20+	30+	40+	
VIOLET OPAQUE								
0254-915*	Purple Opaque	29.00	26.10	23.78	23.20	22.62	21.75	21.46
0272-915*	Violet	8.60	7.74	7.05	6.88	6.71	6.45	6.36
0273-915*	Violet	29.00	26.10	23.78	23.20	22.62	21.75	21.46
0274-915*	Dark Violet	29.00	26.10	23.78	23.20	22.62	21.75	21.46
VIOLET TRANSPARENT								
0080-915	Very Pale Violet	7.90	7.11	6.48	6.32	6.16	5.93	5.85
0082-915	Lavendar, Pinkish	7.90	7.11	6.48	6.32	6.16	5.93	5.85
0040-915	Light Amethyst	7.90	7.11	6.48	6.32	6.16	5.93	5.85
0042-915	Medium Amethyst	7.90	7.11	6.48	6.32	6.16	5.93	5.85
0044-915	Dark Amethyst	7.90	7.11	6.48	6.32	6.16	5.93	5.85
0046-915*	Pale Amethyst	7.90	7.11	6.48	6.32	6.16	5.93	5.85
VIOLET TRANSLUCENT								
0528-915	Lilac	8.60	7.74	7.05	6.88	6.71	6.45	6.36
PINK OPAQUE								
0260-915	Pale Pink	11.50	10.35	9.43	9.20	8.97	8.63	8.51
0262-915*	Powder Pink	29.00	26.10	23.78	23.20	22.62	21.75	21.46
0258-915*	Tongue Pink	29.00	26.10	23.78	23.20	22.62	21.75	21.46
0256-915	Opal Bright Pink	29.00	26.10	23.78	23.20	22.62	21.75	21.46
PINK TRANSLUCENT								
0532-915	Rose Strikes	10.70	9.63	8.77	8.56	8.35	8.03	7.92
0372-915	Light Rose	10.70	9.63	8.77	8.56	8.35	8.03	7.92
0376-915	Medium Rose	10.70	9.63	8.77	8.56	8.35	8.03	7.92
0380-915	Dark Rose	10.70	9.63	8.77	8.56	8.35	8.03	7.92
0456-915	Gold Ruby Strikes	28.80	25.92	23.62	23.04	22.46	21.60	21.31
AURORA TRANSPARENT								
0068-915	Pale Rose	7.90	7.11	6.48	6.32	6.16	5.93	5.85
RED OPAQUE								
0420-915	Light Coral Red	9.85	8.87	8.08	7.88	7.68	7.39	7.29
0256-915	Opal Bright Pink	28.80	25.92	23.62	23.04	22.46	21.60	21.31
0428-915	Light Reddish Orange	9.85	8.87	8.08	7.88	7.68	7.39	7.29
0432-915	Medium Reddish Orange	9.85	8.87	8.08	7.88	7.68	7.39	7.29
0436-915	Dark Reddish Orange	9.85	8.87	8.08	7.88	7.68	7.39	7.29
0438-915	Reddish Purple	9.85	8.87	8.08	7.88	7.68	7.39	7.29
RED TRANSPARENT								
0076-915	Garnet Red	8.60	7.74	7.05	6.88	6.71	6.45	6.36
ORANGE OPAQUE								
0422-915	Orange	9.85	8.87	8.08	7.88	7.68	7.39	7.29
0424-915	Red-Orange	9.85	8.87	8.08	7.88	7.68	7.39	7.29
ORANGE TRANSPARENT								
0072-915	Orange	8.60	7.74	7.05	6.88	6.71	6.45	6.36

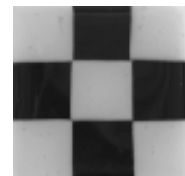
TIP: Try fusing Moretti Rods+Millefioris, use an overglaze spray over clears.



Moretti Milli Fusing



Moretti Rod Fusing



Moretti Sheet Fusing

* New Color Colors within each group are listed from light to dark.

EFFETRE (continued)

CODE	ITEM	BASE	5+	Price per Pound				SOLID CASE
				10+	20+	30+	40+	
YELLOW OPAQUE								
0460-915	Mustard	9.85	8.87	8.08	7.88	7.68	7.39	7.29
0416-915	Lemon Amber	9.85	8.87	8.08	7.88	7.68	7.39	7.29
0418-915	Butter Yellow	9.85	8.87	8.08	7.88	7.68	7.39	7.29
0404-915	Selenium Yellow	9.85	8.87	8.08	7.88	7.68	7.39	7.29
0408-915	Medium Lemon Yellow	9.85	8.87	8.08	7.88	7.68	7.39	7.29
0412-915	Yellow Amber	9.85	8.87	8.08	7.88	7.68	7.39	7.29
YELLOW TRANSPARENT								
0069-915	Yellow Strikes	8.60	7.74	7.05	6.88	6.71	6.45	6.36
0070-915*	Uranium Yellow	22.95	20.66	18.82	18.36	17.90	17.21	16.98
YELLOW TRANSLUCENT								
0536-915	Copper Strikes	17.75	15.98	14.56	14.20	13.85	13.31	13.14
0320-915	Light Beige	8.60	7.74	7.05	6.88	6.71	6.45	6.36
0324-915	Lemon Yellow	8.60	7.74	7.05	6.88	6.71	6.45	6.36
0328-915	Yellow Amber	8.60	7.74	7.05	6.88	6.71	6.45	6.36
GREEN OPAQUE								
0214-915	Nile Green	8.60	7.74	7.05	6.88	6.71	6.45	6.36
0212-915	Pea Green	8.60	7.74	7.05	6.88	6.71	6.45	6.36
0216-915	Light Grass Green	8.60	7.74	7.05	6.88	6.71	6.45	6.36
0211-915*	Sage Green	29.00	26.10	23.78	23.20	22.62	21.75	21.46
0210-915*	Avocado Green	29.00	26.10	23.78	23.20	22.62	21.75	21.46
GREEN TRANSPARENT								
0020-915	Light Grass Green	7.90	7.11	6.48	6.32	6.16	5.93	5.85
0022-915	Med. Grass Green Strikes	7.90	7.11	6.48	6.32	6.16	5.93	5.85
0024-915	Dark Grass Green	7.90	7.11	6.48	6.32	6.16	5.93	5.85
0031-915*	Pale Emerald Green	29.00	26.10	23.78	23.20	22.62	21.75	21.46
0028-915	Light Emerald Green	7.90	7.11	6.48	6.32	6.16	5.93	5.85
0030-915	Dark Emerald Green	7.90	7.11	6.48	6.32	6.16	5.93	5.85
GREEN TRANSLUCENT								
0520-915	Light Grass Green	8.60	7.74	7.05	6.88	6.71	6.45	6.36
0516-915	Nile Green	8.60	7.74	7.05	6.88	6.71	6.45	6.36
0340-915	Apple Green	8.60	7.74	7.05	6.88	6.71	6.45	6.36
0344-915	Hunter Green	8.60	7.74	7.05	6.88	6.71	6.45	6.36

* New Color Colors within each group are listed from light to dark.

EFFETRE (continued)

FILIGRANA

Colored cane cased with clear glass.

CODE	ITEM	BASE	5+	Price per Pound				SOLID CASE
				10+	20+	30+	40+	
0204-925	Black/Clear	19.95	17.96	16.36	15.96	15.56	14.96	14.76
0208-925	White/Clear	19.95	17.96	16.36	15.96	15.56	14.96	14.76
0209-925*	Sky Blue/Clear	20.95	18.86	17.18	16.76	16.34	15.71	15.50
0210-925*	Periwinkle/Clear	20.95	18.86	17.18	16.76	16.34	15.71	15.50
0211-925*	Lt. Green/Clear	20.95	18.86	17.18	16.76	16.34	15.71	15.50
0212-925	Ruby/Clear	22.95	20.66	18.82	18.36	17.90	17.21	16.98
0215-925*	Turquoise/Clear	20.95	18.86	17.18	16.76	16.34	15.71	15.50
0216-925	Aventurine Gold/Clear	22.95	20.66	18.82	18.36	17.90	17.21	16.98
0218-925*	Teal Green/Clear	20.95	18.86	17.18	16.76	16.34	15.71	15.50
0220-925	Aventurine Blue/Clear	24.95	22.46	20.46	19.96	19.46	18.71	18.46
0224-925	Rose/Clear	22.95	20.66	18.82	18.36	17.90	17.21	16.98
0228-925	Green/Clear/White	21.95	19.76	18.00	17.56	17.12	16.46	16.24
0229-925*	Dark Grey/Clear	20.95	18.86	17.18	16.76	16.34	15.71	15.50
0232-925	Aquamarine/Clear/White	21.95	19.76	18.00	17.56	17.12	16.46	16.24
0236-925	Yellow/Clear	21.95	19.76	18.00	17.56	17.12	16.46	16.24
0240-925*	Amethyst/Clear	20.95	18.86	17.18	16.76	16.34	15.71	15.50
0244-925*	Orange/Clear	20.95	18.86	17.18	16.76	16.34	15.71	15.50
0248-925	Blue/Clear/White	22.95	20.66	18.82	18.36	17.90	17.21	16.98
0264-925*	Ivory/Clear	20.95	18.86	17.18	16.76	16.34	15.71	15.50
0272-925*	Violet/Clear	20.95	18.86	17.18	16.76	16.34	15.71	15.50
0420-925*	Lt Coral Red/Clear	20.95	18.86	17.18	16.76	16.34	15.71	15.50
0438-925*	Reddish Purple/Clear	20.95	18.86	17.18	16.76	16.34	15.71	15.50

EFFETRE SHEET GLASS

We also carry the complete line of 104 COE Effetre sheet glass. Each sheet is 20" x 20" in size and approximately 3mm in thickness. Effetre cane and sheet glass is also available in dichroic form, see pg 99 for more information.

All Effetre sheet glass MAY BE MIXED FOR QUANTITY DISCOUNTS.

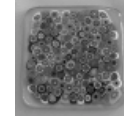
CODE	ITEM	Price per Sheet					
		1+	6+	12+	24+	36+	72+
0004-910	Clear	27.99	25.00	22.99	20.99	19.99	18.99
0012-910	Light Amber	27.99	25.00	22.99	20.99	19.99	18.99
0015-910	Opalin White	30.99	28.99	25.99	23.99	22.99	21.99
0018-910	Bronze	27.99	25.00	22.99	20.99	19.99	18.99
0028-910	Light Emerald Green	27.99	25.00	22.99	20.99	19.99	18.99
0030-910	Dark Emerald Green	27.99	25.00	22.99	20.99	19.99	18.99
0034-910	Light Aquamarine	27.99	25.00	22.99	20.99	19.99	18.99
0036-910	Dark Aquamarine	27.99	25.00	22.99	20.99	19.99	18.99
0042-910	Medium Amethyst	27.99	25.00	22.99	20.99	19.99	18.99
0052-910	Light Blue	27.99	25.00	22.99	20.99	19.99	18.99
0060-910	Cobalt Blue	27.99	25.00	22.99	20.99	19.99	18.99
0064-910	Black	27.99	25.00	22.99	20.99	19.99	18.99
0068-910	Pale Rose	27.99	25.00	22.99	20.99	19.99	18.99
0069-910	Yellow	30.99	28.99	25.99	23.99	22.99	21.99
0072-910	Orange	30.99	28.99	25.99	23.99	22.99	21.99
0076-910	Garnet Red	30.99	28.99	25.99	23.99	22.99	21.99
0080-910	Very Pale Violet	27.99	25.00	22.99	20.99	19.99	18.99
0204-910	White	30.99	28.99	25.99	23.99	22.99	21.99

* New Color

EFFETRE (continued)

EFFETRE MILLEFIORI

Millefiori is available in a variety of sizes from 3-4 mm to 12-14 mm diameters in opaque & transparent colors. Tronconi are 15-25mm slices. All millefiori & tronconi may be mixed for qty discounts.



CODE	ITEM	Price per Ounce					
		1+	4+	8+	16+	80+	160+
MI-OP34	Assorted Opaque Millefiori 3-4mm	3.49	3.32	2.97	2.23	2.07	1.73
MI-TR34	Assorted Transparent Millefiori 3-4mm	3.49	3.32	2.97	2.23	2.07	1.73
MI-OP45	Assorted Opaque Millefiori 4-5mm	3.49	3.32	2.97	2.23	2.07	1.73
MI-TR45	Assorted Transparent Millefiori 4-5mm	3.49	3.32	2.97	2.23	2.07	1.73
MI-OP56	Assorted Opaque Millefiori 5-6mm	3.49	3.32	2.97	2.23	2.07	1.73
MI-TR56	Assorted Transparent Millefiori 5-6mm	3.49	3.32	2.97	2.23	2.07	1.73
MI-OP67	Assorted Opaque Millefiori 6-7mm	3.49	3.32	2.97	2.23	2.07	1.73
MI-TR67	Assorted Transparent Millefiori 6-7mm	3.49	3.32	2.97	2.23	2.07	1.73
MI-OP78	Assorted Opaque Millefiori 7-8mm	3.49	3.32	2.97	2.23	2.07	1.73
MI-TR78	Assorted Transparent Millefiori 7-8mm	3.49	3.32	2.97	2.23	2.07	1.73
MI-OP89	Assorted Opaque Millefiori 8-9mm	3.49	3.32	2.97	2.23	2.07	1.73
MI-TR89	Assorted Transparent Millefiori 8-9mm	3.49	3.32	2.97	2.23	2.07	1.73
MI-OP910	Assorted Opaque Millefiori 9-10mm	3.49	3.32	2.97	2.23	2.07	1.73
MI-TR910	Assorted Transparent Millefiori 9-10mm	3.49	3.32	2.97	2.23	2.07	1.73
MI-OP1112	Assorted Opaque Millefiori 11-12mm	3.49	3.32	2.97	2.23	2.07	1.73
MI-TR1112	Assorted Transparent Millefiori 11-12mm	3.49	3.32	2.97	2.23	2.07	1.73
MI-OP1214	Assorted Opaque Millefiori 12-14mm	3.49	3.32	2.97	2.23	2.07	1.73
MI-TR1214	Assorted Transparent Millefiori 12-14mm	3.49	3.32	2.97	2.23	2.07	1.73
MI-OP-TRONC	Assorted Opaque Tronconi 15-25mm	4.64	4.41	3.94	2.97	2.74	2.32
MI-TR-TRONC	Assorted Transparent Tronconi 15-25mm	4.64	4.41	3.94	2.97	2.74	2.32

EFFETRE FRIT We have several NEW colors of Effetre fine frit available in fine (-FI), medium (-MD), coarse (-CO) & powder (-PO). Packed in 4oz clear, re-useable plastic jars. Jars may be mixed for quantity discounts. Some sizes not available.

CODE	ITEM	Price per Jar (4 oz)		CODE	ITEM	Price per Jar (4 oz)	
		1+	12+			1+	12+
TRANSPARENT COLORS				0072	Orange	4.00	3.00
0012	Light Amber	4.00	3.00	0076	Garnet Red	4.00	3.00
0028	Light Emerald Green	4.00	3.00	0088	Dark Grey	4.00	3.00
0030	Dark Emerald Green	4.00	3.00	OPAQUE COLORS			
0034	Light Aquamarine	4.00	3.00	0204	White	4.00	3.00
0040	Light Amethyst	4.00	3.00	0224	Sky Blue	4.00	3.00
0048	Grey	4.00	3.00	0236	Dark Turquoise	4.00	3.00
0060	Cobalt Blue	4.00	3.00	0242	Medium Lapis Blue	4.00	3.00
0069	Yellow	4.00	3.00	0246	Dark Lapis Blue	4.00	3.00

EFFETRE COMPATIBLE CULLET

CODE	ITEM	Price Per Pound	1+	10+	30+	100+
E-CULCLR	Effetre Compatible Cullet, Clear		4.25	3.75	2.75	2.10
E-CULCLR	Effetre Compatible Cullet, Black		4.89	4.31	3.16	2.45

EFFETRE COMPATIBLE BATCH

NEW Glasma 104 COE pelletized Moretti compatible batch. Has properties similar to Glasma 71 – crystal clear, pelletized, Moretti compatible, etc..

Code	Item	Price per Bag						
		1+	42+	84+	167+	335+	671+	840+
GL-104-RICH	Glasma 104 COE Batch	28.35	27.78	27.22	26.68	26.14	25.62	24.60

EFFETRE (continued)

EFFETRE STRINGERS

Effetre stringers are available in a variety of colors. Stringers are same length as cane, that is 39" long. Approximately 25 stringers/pound.

CODE	ITEM	Price per Pound						Case
		1+	5+	10+	20+	30+	40+	
0004-912	Clear 2-3mm	7.90	7.11	6.48	6.32	6.16	5.93	5.85
0020-912	Light Grass Green 2-3mm	7.90	7.11	6.48	6.32	6.16	5.93	5.85
0028-912	Light Emerald Green 2-3mm	7.90	7.11	6.48	6.32	6.16	5.93	5.85
0030-912	Dark Emerald Green 2-3mm	7.90	7.11	6.48	6.32	6.16	5.93	5.85
0034-912	Light Aquamarine 2-3mm	7.90	7.11	6.48	6.32	6.16	5.93	5.85
0036-912	Dark Aquamarine 2-3mm	7.90	7.11	6.48	6.32	6.16	5.93	5.85
0042-912	Medium Amethyst 2-3mm	7.90	7.11	6.48	6.32	6.16	5.93	5.85
0044-912	Dark Amethyst 2-3mm	7.90	7.11	6.48	6.32	6.16	5.93	5.85
0052-912	Light Blue 2-3mm	7.90	7.11	6.48	6.32	6.16	5.93	5.85
0060-912	Cobalt Blue 2-3mm	7.90	7.11	6.48	6.32	6.16	5.93	5.85
0212-912	Pea Green 2-3mm	8.60	7.74	7.05	6.88	6.71	6.45	6.36
0214-912	Nile Green 2-3mm	8.60	7.74	7.05	6.88	6.71	6.45	6.36
0216-912	Light Grass Green 2-3mm	8.60	7.74	7.05	6.88	6.71	6.45	6.36
0224-912	Sky Blue 2-3mm	8.60	7.74	7.05	6.88	6.71	6.45	6.36
0240-912	Medium Cobalt Blue 2-3mm	10.75	10.21	9.68	9.14	8.60	8.28	7.96
0246-912	Bluish Amethyst 2-3mm	16.80	15.12	13.78	13.44	13.10	12.60	12.43
0260-912	Flamingo 2-3mm	11.50	10.35	9.43	9.20	8.97	8.63	8.51
0264-912	Light Beige 2-3mm	8.60	7.74	7.05	6.88	6.71	6.45	6.36
0272-912	Violet 2-3mm	8.60	7.74	7.05	6.88	6.71	6.45	6.36
0276-912	Dark Ivory 2-3mm	8.60	7.74	7.05	6.88	6.71	6.45	6.36
0404-912	Selenium Yellow 2-3mm	9.85	8.87	8.08	7.88	7.68	7.39	7.29
0408-912	Medium Lemon Yellow 2-3mm	9.85	8.87	8.08	7.88	7.68	7.39	7.29
0422-912	Orange 2-3mm	9.85	8.87	8.08	7.88	7.68	7.39	7.29
0436-912	Dark Reddish Orange 2-3mm	9.85	8.87	8.08	7.88	7.68	7.39	7.29
0452-912	Reddish Brown 2-3mm	9.85	8.87	8.08	7.88	7.68	7.39	7.29

EXTRA DENSE BLACK STRINGER

Effetre Extra Dense Black stringer is an excellent color to use when you need an extra dense black. Use when the regular black is not dark enough.

CODE	ITEM	Price per Ounce						Case
		1+	5+	10+	20+	30+	40+	
0066-912	Extra Dense Black Stringer 2mm	4.06	3.63	3.33	3.25	3.17	3.05	3.01

GOLD RUBY CHUNK

Solid chunks of gold ruby. Sizes range from 1"x1" to 7"x7" chunks.

CODE	ITEM	BASE	Price per Pound					SOLID CASE
			5+	10+	20+	30+	40+	
0456-91CH	Gold Ruby Chunk	22.80	20.52	18.70	18.24	17.78	17.10	16.87

EFFETRE COLOR CHART

CODE	ITEM	Price Per Piece
E-CHIPCHART	Effetre Color Chip Chart	30.00
E-CHIPCHART2	Effetre Factory Chip Chart	49.00

EFFETRE (continued)

EFFETRE "SOLID" AVENTURINE

Two new colors are available in "solid" aventurine. Both have clear cores surrounded by the aventurine on the outside. A thin layer clear is on top of the aventurine. You get much more aventurine than with a "filigrana." Canes are available in 13" and 40" (1 meter) lengths. 1 rod = 3 oz.

CODE	ITEM	Price per Ounce			
		1+	4+	8+	16+
0220-995	Solid Blue Aventurine	4.75	3.75	3.50	3.00
0216-995	Solid Gold Aventurine	3.75	3.25	2.75	2.44

AVENTURINE FRIT

Both blue & gold aventurine frit are now available in 2 frit sizes. Fine = 1.0mm, coarse = 2.4mm and chunks are fist sized pieces. Frit is packed in clear plastic re-useable and re-sealable plastic jars.

CODE	ITEM	Price per Ounce			
		1+	4+	8+	16+
0216-99FI	Gold Aventurine Fine	3.00	2.50	2.00	1.69
0216-99CO	Gold Aventurine Coarse	3.00	2.50	2.00	1.69
0216-99CH	Gold Aventurine Chunks	3.00	2.50	2.00	1.69
0220-99FI	Blue Aventurine Fine	4.00	3.00	2.75	2.25
0220-99CO	Blue Aventurine Coarse	4.00	3.00	2.75	2.25
0220-99CH	Blue Aventurine Chunks	4.00	3.00	2.75	2.25

EFFETRE CLEAR TUBES 5-6MM

CODE	ITEM	1+	5+	Price per Pound			CASE
				10+	20+	30+	
0004-9T135	Clear Reeded Tube 5mm	10.00	9.00	8.20	8.00	7.80	7.50
0004-9T235	Clear Hexagonal Tube 5mm	10.00	9.00	8.20	8.00	7.80	7.50

MURANO CANE *by Vetrofond*

Murano cane is available in 68 different transparent colors. Each cane weighs approximately 0.15 lbs (0.08 kg) and is approximately 40" (1 M) long. We carry the cane in 5-6mm diameters. Certain Lauscha cane is available in 6-7mm and 7-8mm diameters. All colors are generally compatible with one another and with Effetre cane. The COE is in the 104 range. One case of Murano is 22 lbs. 1 color, 1 style, 1 diameter. The COE is 104 x 10⁻⁷. We have several NEW colors that are not available from Effetre. We recommend testing all colors to ensure compatibility with YOUR base glass and YOUR particular process. **All Murano cane, Effetre cane, Lauscha cane and Satake cane MAY BE MIXED FOR QUANTITY DISCOUNTS.**

NO MINIMUM ORDER FOR RODS.

We have arranged each color in the list below from Light to Dark. The lightest colors are on the top of the list and the darker colors are on the bottom. This a general guide for selection only. It can be helpful in choosing colors when, for example, you want to know whether a particular color is lighter or darker than another color - just look above or below the color, the one on top is generally LIGHTER and the one below is generally DARKER.

Color chart may be viewed on our web page at CRLOO.COM.

CODE	ITEM	BASE	5+	Price per Pound				SOLID CASE
				10+	20+	30+	40+	
CLEAR								
0004-902	Clear 2-3mm	7.90	7.11	6.48	6.32	6.16	5.93	5.85
0004-903	Clear 3-4mm	7.90	7.11	6.48	6.32	6.16	5.93	5.85
0004-905	Clear 5-6mm	7.90	7.11	6.48	6.32	6.16	5.93	5.85
0004-906	Clear 6-7mm	7.90	7.11	6.48	6.32	6.16	5.93	5.85
0004-907	Clear 7-8mm	7.90	7.11	6.48	6.32	6.16	5.93	5.85
0004-908	Clear 8-9mm	7.90	7.11	6.48	6.32	6.16	5.93	5.85
0004-9010	Clear 10-11mm	7.90	7.11	6.48	6.32	6.16	5.93	5.85
0004-9014	Clear 14-15mm	7.90	7.11	6.48	6.32	6.16	5.93	5.85
BLACK TRANSPARENT								
0064-902	Black 2mm	8.60	7.74	7.05	6.88	6.71	6.45	6.36
0064-905	Black	7.90	7.11	6.48	6.32	6.16	5.93	5.85
WHITE OPAQUE								
0204-905	White	8.60	7.74	7.05	6.88	6.71	6.45	6.36
BROWN TRANSPARENT								
0007-905	Light Amber	7.90	7.11	6.48	6.32	6.16	5.93	5.85
0008-905	Pale Amber	7.90	7.11	6.48	6.32	6.16	5.93	5.85
0012-905	Light Amber	7.90	7.11	6.48	6.32	6.16	5.93	5.85
0014-905	Medium Amber	7.90	7.11	6.48	6.32	6.16	5.93	5.85
BROWN OPAQUE								
0460-905	Light Ocher	9.85	8.87	8.08	7.88	7.68	7.39	7.29
0276-905EX	Extra Dark Ivory	8.60	7.74	7.05	6.88	6.71	6.45	6.36
0276-905SU	Super Dark Ivory	8.60	7.74	7.05	6.88	6.71	6.45	6.36

* New Color Colors within each group are listed from light to dark.

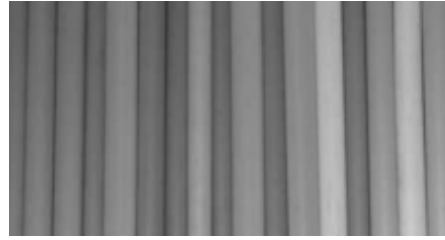
MURANO (continued)

CODE	ITEM	BASE	Price per Pound					SOLID CASE
			5+	10+	20+	30+	40+	
BLUE TRANSPARENT								
0052-905	Light Blue	7.90	7.11	6.48	6.32	6.16	5.93	5.85
0054-905	Medium Blue	7.90	7.11	6.48	6.32	6.16	5.93	5.85
0034-905	Light Aquamarine	7.90	7.11	6.48	6.32	6.16	5.93	5.85
0036-905	Dark Aquamarine	7.90	7.11	6.48	6.32	6.16	5.93	5.85
0056-905	Dark Blue	7.90	7.11	6.48	6.32	6.16	5.93	5.85
0062-905	Dark Cobalt Blue	7.90	7.11	6.48	6.32	6.16	5.93	5.85
BLUE OPAQUE								
0224-905	Sky Blue	8.60	7.74	7.05	6.88	6.71	6.45	6.36
0232-905	Lt Turquoise	8.60	7.74	7.05	6.88	6.71	6.45	6.36
0236-905	Dark Turquoise	8.60	7.74	7.05	6.88	6.71	6.45	6.36
BLUE-GREEN TRANSPARENT								
0026-905	Light Teal	7.90	7.11	6.48	6.32	6.16	5.93	5.85
VIOLET TRANSPARENT								
0080-905	Pale Lavender	7.90	7.11	6.48	6.32	6.16	5.93	5.85
0082-905	Lavender Pinkish	7.90	7.11	6.48	6.32	6.16	5.93	5.85
0040-905	Light Amethyst	7.90	7.11	6.48	6.32	6.16	5.93	5.85
0042-905	Medium Amethyst	7.90	7.11	6.48	6.32	6.16	5.93	5.85
0044-905	Dark Amethyst	7.90	7.11	6.48	6.32	6.16	5.93	5.85
PINK TRANSPARENT								
0068-905	Rose	7.90	7.11	6.48	6.32	6.16	5.93	5.85
YELLOW TRANSPARENT								
0069-905	Yellow Strikes	7.90	7.11	6.48	6.32	6.16	5.93	5.855
YELLOW OPAQUE								
0404-905	Selenium Yellow	9.85	8.87	8.08	7.88	7.68	7.39	7.29
0412-905	Dark Yellow	9.85	8.87	8.08	7.88	7.68	7.39	7.29
0416-905	Bright Acid Yellow	9.85	8.87	8.08	7.88	7.68	7.39	7.29
GREEN TRANSPARENT								
0020-905	Light Grass Green	7.90	7.11	6.48	6.32	6.16	5.93	5.85
0022-905	Medium Grass Green	7.90	7.11	6.48	6.32	6.16	5.93	5.85
0024-905	Dark Grass Green	7.90	7.11	6.48	6.32	6.16	5.93	5.85
0026-905	Sea Green	7.90	7.11	6.48	6.32	6.16	5.93	5.85
0028-905	Light Emerald Green	7.90	7.11	6.48	6.32	6.16	5.93	5.85
0030-905	Dark Emerald Green	7.90	7.11	6.48	6.32	6.16	5.93	5.85
GREEN OPAQUE								
0212-905	Pea Green	8.60	7.74	7.05	6.88	6.71	6.45	6.36
0216-905	Light Grass Green	8.60	7.74	7.05	6.88	6.71	6.45	6.36

* New Color Colors within each group are listed from light to dark.

MOTHER OF PEARL CANE

We have this fantastic NEW Mother of Pearl color that is compatible with Moretti, Murano, and Lauscha glass for lampworking. Not to be confused with Mother of Pearl Powderes. As always, we recommend testing for your particular application. This glass adds a truly unique silky, pearlescent sheen to it that no other glass has. May be combined with Moretti, Murano & Lauscha glass for quantity discounts. Rod is approximately 1" in diameter, cane is 7-10 mm in diameter.



CODE	ITEM	Price per Pound					
		1+	5+	10+	20+	30+	CASE*
MP-11	White Mother of Pearl Rod	17.95	16.16	14.72	14.36	14.00	13.46
MP-11-C	White Mother of Pearl Cane	24.95	22.46	20.46	19.46	18.71	18.46
MP-12	Amethyst Mother of Pearl Rod	17.95	16.16	14.72	14.36	14.00	13.46
MP-12-C	Amethyst Mother of Pearl Cane	24.95	22.46	20.46	19.46	18.71	18.46
MP-13	Blue Mother of Pearl Rod	17.95	16.16	14.72	14.36	14.00	13.46
MP-13-C	Blue Mother of Pearl Cane	24.95	22.46	20.46	19.46	18.71	18.46
MP-14	Green Mother of Pearl Rod	17.95	16.16	14.72	14.36	14.00	13.46
MP-14-C	Green Mother of Pearl Cane	24.95	22.46	20.46	19.46	18.71	18.46
MP-16	Pink Mother of Pearl Rod	17.95	16.16	14.72	14.36	14.00	13.46
MP-16-C	Pink Mother of Pearl Cane	24.95	22.46	20.46	19.46	18.71	18.46
MP-17	Topaz Mother of Pearl Rod	17.95	16.16	14.72	14.36	14.00	13.46
MP-17-C	Topaz Mother of Pearl Cane	24.95	22.46	20.46	19.46	18.71	18.46
MP-18	Grey Mother of Pearl Rod	17.95	16.16	14.72	14.36	14.00	13.46
MP-18-C	Grey Mother of Pearl Cane	24.95	22.46	20.46	19.46	18.71	18.46

*1 case is 22 lbs

SATAKE JAPANESE GLASS RODS

These new hand-pulled Japanese glass rods are available in over 120 different lead bearing, non-lead bearing and soda colors. Rods are approximately 22 inches long. Diameters vary from 4mm to 8mm. Each rod weighs approximately 0.15 lbs. The COE of this glass is in the 113 - 120 range. As always, test for compatibility. Satake glass has some truly unique, rich and vibrant colors. The glass is VERY soft. Use in a cool flame. If you are used to working with Effetre, this glass is much softer. Try it, you'll love the colors! See our web page for a color chart. Samples color charts may be purchased. Anneal at 890F. **Code: G-SATAKE-SAM Price: \$129 for a set of 3 color charts.**

Soda and Lead Colors are not generally compatible.

All Murano cane, Effetre cane, Lauscha cane and Satake cane MAY BE MIXED FOR QUANTITY DISCOUNTS.

NO MINIMUM ORDER FOR RODS. Anneal at 870°F

PRICE PER POUND					
1+	5+	10+	20+	30+	40+
29.75	29.16	28.56	27.37	26.18	25.29

Colors on next page.

SODA COLORS—TRANSPARENT

SA-036 Clear
 SA-074 Red
 SA-075 Amber Orange
 SA-076 Dark Amber
 SA-077 Amber
 SA-078 Light Amber
 SA-114* Medium Red
 SA-115* Pale Beige
 SA-116* Brown Orange
 SA-117* Yellow
 SA-118* Reddish Orange

SODA COLORS—PASTEL

SA-037 Lemon Yellow
 SA-038 Bright Yellow
 SA-039 Light Reddish Orange
 SA-040 Orangish Red
 SA-107* Light Brown
 SA-108* Dark Ivory
 SA-109* White
 SA-110* Black
 SA-111* Green
 SA-112* Dark Blue
 SA-113* Dark Turquoise
 SA-119* Light Red
 SA-120* Dark Red

LEAD COLORS—OPALESCENT

SA-015 Light Pink
 SA-016 Baby Blue
 SA-017 Light Periwinkle Blue
 SA-018 Light Yellow
 SA-019 Lime Green
 SA-020 Grass Green
 SA-024 Light White
 SA-025 Pale White
 SA-052 Aquamarine
 SA-057 Wisteria Violet
 SA-072 Medium Green
 SA-088* Blue Green
 SA-091* Pale Blue
 SA-092* Cream
 SA-093* Dark Turquoise
 SA-094* Green Blue
 SA-100* Light Purple

LEAD COLORS—PASTEL

SA-022 Black
 SA-023 White
 SA-026 Pink
 SA-027 Dark Purple
 SA-028 Medium Turquoise
 SA-029 Medium Lapis Blue
 SA-030 Celadon
 SA-031 Dark Green
 SA-032 Green
 SA-033 Yellow Green
 SA-034 Honey Yellow
 SA-035 Extra Dark Brown
 SA-058 Bubble Gum Pink
 SA-060 Light Pink
 SA-061 Light Ivory
 SA-062 Salmon Pink
 SA-063 Violet
 SA-064 Light Brown
 SA-065 Light Turquoise
 SA-066 Medium Grey Green
 SA-067 Dark Grey
 SA-068 Grey Brown
 SA-069 Moss Green
 SA-070 Seafoam Green
 SA-071 Dark Olive Green
 SA-073 Dark Steel Blue
 SA-081* Dark Green
 SA-082* Mint Green
 SA-083* Dark Gray Green
 SA-084* Light Moss Green
 SA-089* Blue
 SA-090* Light Blue
 SA-095* Light Blue
 SA-096* Dark Blue
 SA-097* Light Violet
 SA-098* Pink
 SA-099* Salmon Pink
 SA-101* Gray Brown
 SA-105* Gray
 SA-106 Gray Blue

SODA COLORS—OPALESCENT

SA-079 Honey Amber
 SA-080 Honey Yellow

LEAD COLORS—TRANSPARENT

SA-001 Clear
 SA-002 Light Pink
 SA-003 Pink
 SA-004 Medium Purple
 SA-005 Violet
 SA-006 Dark Cobalt Blue
 SA-007 Dark Aquamarine
 SA-008 Light Aquamarine
 SA-009 Teal Blue
 SA-010 Teal Green
 SA-011 Dark Green
 SA-012 Lime Green
 SA-013 Steel Grey
 SA-014 Bronze
 SA-021 Gold Ruby
 SA-041 Light Violet
 SA-042 Olive Green
 SA-043 Light Green
 SA-044 Medium Cobalt Blue
 SA-045 Medium Aquamarine
 SA-046 Light Gray Blue
 SA-047 Medium Olive Amber
 SA-048 Dark Bronze
 SA-049 Medium Blue
 SA-050 Light Bronze
 SA-051 Light Grey
 SA-053 Pale Purple
 SA-054 Violet
 SA-055 Dark Purple
 SA-056 Dark Violet Blue
 SA-059 Coral Pink
 SA-085* Bronze Green
 SA-086* Dark Aquamarine
 SA-087* Pale Green
 SA-102* Dark Steel Blue
 SA-103* Medium Steel Gray
 SA-104* Light Purple

LAUSCHA

COLORED TUBING & CANE FOR LAMPWORKING, BEADMaking, GLASS BLOWING & NEON

Lauscha glass is made for lampworking, beadmaking, glass blowing and neon. It is available in over 50 different transparent and opaque colors and several different shapes ranging from round to ribbed and triangular in tube, cane and cased cane form. The lampworking & neon tubing and cane are hand-pulled and are available in sizes from 6-35mm diameter for tubing and 2-30mm diameter for cane. Striking colors are listed in the product descriptions. Striking colors are: 300, 310, 380, 390, 400, 410, 420, 430, and 440. The COE ranges from 95 - 105 x 10⁻⁷. Compatible with Moretti, Kugler and Q-Color frit & powder. We recommend testing all colors to ensure compatibility with YOUR base glass and YOUR particular process. All Lauscha tubing MAY BE MIXED FOR QUANTITY DISCOUNTS. Anneal at 900F. **All Lauscha cane, Effetre cane, Murano cane and Satake cane MAY BE MIXED FOR QUANTITY DISCOUNTS.** Cane is 1m(39") long, Tubes are 1.2m (48") long. Metric Conversion: 25.4mm = 1" Anneal at 900°F

NO MINIMUM ORDER FOR RODS OR TUBES.

TRANSPARENT COLORS

CODE	ITEM	BASE	5+	Price per Pound			CASE
				10+	20+	40+	
L-490-80	Clear	10.95	10.40	9.85	9.30	8.76	7.44
L-170-80	Black	11.99	11.39	10.79	10.19	9.59	8.15
L-180-80	Grey	11.99	11.39	10.79	10.19	9.59	8.15
L-230-80	Light Amber	11.99	11.39	10.79	10.19	9.59	8.15
L-140-80	Medium Amber	11.99	11.39	10.79	10.19	9.59	8.15
L-160-80	Aquamarine	11.99	11.39	10.79	10.19	9.59	8.15
L-150-80	Aqua	11.99	11.39	10.79	10.19	9.59	8.15
L-100-80	Cobalt Blue	11.99	11.39	10.79	10.19	9.59	8.15
L-210-80	Light Violet	11.99	11.39	10.79	10.19	9.59	8.15
L-200-80	Medium Violet	11.99	11.39	10.79	10.19	9.59	8.15
L-220-80	Dark Brown	11.99	11.39	10.79	10.19	9.59	8.15
L-290-80	Peach	11.99	11.39	10.79	10.19	9.59	8.15
L-240-80	Light Grass Green	11.99	11.39	10.79	10.19	9.59	8.15
L-190-80	Medium Emerald Green	11.99	11.39	10.79	10.19	9.59	8.15
L-270-80	Grass Green	11.99	11.39	10.79	10.19	9.59	8.15

OPAQUE COLORS

CODE	ITEM	BASE	5+	Price per Pound			CASE
				10+	20+	40+	
L-280-80	Opal White, Strikes Opaque	13.15	12.49	11.83	11.17	10.52	8.94
L-260-80	White	13.15	12.49	11.83	11.17	10.52	8.94
L-420-80	Turquoise Blue, Strikes	13.15	12.49	11.83	11.17	10.52	8.94
L-430-80	Sky Blue, Strikes	13.15	12.49	11.83	11.17	10.52	8.94
L-440-80	Violet, Strikes	13.15	12.49	11.83	11.17	10.52	8.94
L-351-80	Green Opaque	13.15	12.49	11.83	11.17	10.52	8.94
L-380-80	Orange, Strikes	13.15	12.49	11.83	11.17	10.52	8.94
L-300-80	Orange, Strikes	13.15	12.49	11.83	11.17	10.52	8.94
L-310-80	Red Orange, Strikes	13.15	12.49	11.83	11.17	10.52	8.94
L-410-80	Red, Strikes	13.15	12.49	11.83	11.17	10.52	8.94
L-400-80	Red, Strikes	13.15	12.49	11.83	11.17	10.52	8.94
L-390-80	Selenium Yellow	13.15	12.49	11.83	11.17	10.52	8.94

LAUSCHA (continued)

KRYOLITH OPAL GLASS

CODE	ITEM	BASE	Price per Pound				CASE
			5+	10+	20+	40+	
L-600-80	Kryolith Opal Blue (Veiled Glass)	19.75	18.76	17.77	16.78	15.80	13.43
L-601-80	Kryolith Opal Brown (Veiled Glass)	19.75	18.76	17.77	16.78	15.80	13.43
L-602-80	Kryolith Opal Green (Veiled Glass)	19.75	18.76	17.77	16.78	15.80	13.43
L-603-80	Kryolith Opal Rose (Veiled Glass)	19.75	18.76	17.77	16.78	15.80	13.43

CANDY CANE FOR MAKING GLASS PENS

CODE	ITEM	BASE	Price per Pound				CASE
			5+	10+	20+	40+	
L-320-80	Red & Yellow on Opal White	19.75	18.76	17.77	16.78	15.80	13.43
L-321-80	Red & White & Black & Blue on Clear	19.75	18.76	17.77	16.78	15.80	13.43
L-322-80	Blue & Black on Clear	19.75	18.76	17.77	16.78	15.80	13.43
L-323-80	Orange & Black on Clear	19.75	18.76	17.77	16.78	15.80	13.43
L-324-80	Yellow & Black on Clear	19.75	18.76	17.77	16.78	15.80	13.43
L-325-80	Blue & White on Clear	19.75	18.76	17.77	16.78	15.80	13.43
L-326-80	Pink & White & Black on Clear	19.75	18.76	17.77	16.78	15.80	13.43
L-327-80	Red & Dark Blue on Clear	19.75	18.76	17.77	16.78	15.80	13.43
L-328-80	Orange, Yellow & Black/Clear	19.75	18.76	17.77	16.78	15.80	13.43
L-329-80	Blue, Black, Adventurine Gold Clear	19.75	18.76	17.77	16.78	15.80	13.43
L-330-80	White & Amber on Clear	19.75	18.76	17.77	16.78	15.80	13.43
L-331-80	Green, Black Orange, Adventurine Gold, Clear	19.75	18.76	17.77	16.78	15.80	13.43
L-332-80	Yellow, Lt. Aqua, White, Adventurine Gold, Clr	19.75	18.76	17.77	16.78	15.80	13.43
L-334-80	Black/White/Adventurine Gold/Clr Candy Cane	19.75	18.76	17.77	16.78	15.80	13.43
L-335-80	Orange & Dark Blue/Clear Candy Cane	19.75	18.76	17.77	16.78	15.80	13.43
L-336-80	Ora/Yel/Adv Glod Candy Cane	19.75	18.76	17.77	16.78	15.80	13.43
L-337-80	Orange Filigrana	19.75	18.76	17.77	16.78	15.80	13.43
L-338-80	White Filigrana	19.75	18.76	17.77	16.78	15.80	13.43
L-339-80	Red/White/Blue/Black/Green Candy Cane	19.75	18.76	17.77	16.78	15.80	13.43
L-343-80	Yellow/Black Stripe Candy Cane	19.75	18.76	17.77	16.78	15.80	13.43
L-344-80	Green/Black/Adventurine Gold Candy Cane	19.75	18.76	17.77	16.78	15.80	13.43
L-345-80	Blue Stripe Candy Cane	19.75	18.76	17.77	16.78	15.80	13.43
L-346-80	Yellow/Black Candy Cane	19.75	18.76	17.77	16.78	15.80	13.43
L-347-80	Blue/Red/Black Candy Cane	19.75	18.76	17.77	16.78	15.80	13.43
L-348-80	White/Blue Stripe Candy Cane	19.75	18.76	17.77	16.78	15.80	13.43
L-349-80	Light Blue Adventurine Gold Candy Cane	19.75	18.76	17.77	16.78	15.80	13.43
L-352-80	Black/Orange/Green Opal Candy Cane	19.75	18.76	17.77	16.78	15.80	13.43
L-353-80	Black/Aqua/Adventurine Gold Candy Cane	19.75	18.76	17.77	16.78	15.80	13.43
L-355-80	Yellow Stripe Candy Cane	19.75	18.76	17.77	16.78	15.80	13.43
L-356-80	Yellow/Blue/Black/Adventurine Gold Candy	19.75	18.76	17.77	16.78	15.80	13.43
L-357-80	Blue/Black/Orange/Adventurine Gold Candy	19.75	18.76	17.77	16.78	15.80	13.43

Uranium Glass

We just obtained a small lot of Uranium glass bars. This uranium glass is also known as "Vaseline" glass. Quantities limited to stock on hand. When it's gone there is not likely to be more. Bars are 40 – 50 mm in diameter and approx. 36" long. Be sure to test it for compatibility for your particular application before you use it.

CODE	ITEM	BASE	Price per Pound				CASE
			5+	10+	20+	40+	
G-URANIUM	Uranium Glass	17.95	17.05	16.16	15.26	14.36	12.03

LAUSCHA (continued)

NEW MULTI COLOR MARBLE STOCK

NEW Lauscha marble stock in stock now. You can now easily and quickly make professional-looking marbles. Most of the work requiring a furnace and glory hole has been done for you. Just pull the quantity of glass you need off of the marble stock, twist and shape and you're marble is done! Since this glass is made by Lauscha, you know the glass is a superior quality. We have 43 NEW styles of marble stock available now. Approximately 1" dia, 40" long. See web site for color photos and styles of stock.

CODE	ITEM	BASE	5+	Price per Pound			CASE
				10+	20+	40+	
L-700	Multi Color marble Stock	27.95	26.55	25.16	23.76	22.36	18.73

RIBBED CANE FOR MAKING NIBS ON GLASS PENS

CODE	ITEM	BASE	5+	Price per Pound			CASE
				10+	20+	40+	
L-010-80	Red Trans. Ribbed	17.88	16.98	16.09	15.19	14.30	12.16
L-020-80	Aquamarine Trans. Ribbed	16.12	15.31	14.50	13.70	12.89	10.96
L-040-80	White Opal Ribbed	16.12	15.31	14.50	13.70	12.89	10.96
L-050-80	Dark Amber Ribbed	16.12	15.31	14.50	13.70	12.89	10.96
L-060-80	Turquoise Ribbed	16.12	15.31	14.50	13.70	12.89	10.96

Lauscha Rod Assortment Kit - Rich reds, yellows, and a fantastic purple! A wonderful assortment of transparent and opaque rods to all types of lampworking, Candy & Ribbed cane included for making glass pens. 1/3 rods of all available colors. **Code: L-KIT1 Price: Regular \$79, Assortment \$69**

Lauscha Glass Pen Kit. This kit contains 6 13" pieces of candy cane, and 5 13" pieces of ribbed cane for nibs. This is enough to make 12-16 pens and up to 50 nibs. **Code: L-KIT2 Price: \$13.99**

FILIGRANA

CODE	ITEM	BASE	5+	Price per Pound			CASE
				10+	20+	40+	
L-337-80	Orange Filigrana	19.75	18.76	17.77	16.78	15.80	13.43
L-338-80	White Filigrana	19.75	18.76	17.77	16.78	15.80	13.43
L-341-08	Yellow Filigrana	19.75	18.76	17.77	16.78	15.80	13.43
L-342-08	Light Orange	19.75	18.76	17.77	16.78	15.80	13.43
L-354-08	Adventurine Gold	19.75	18.76	17.77	16.78	15.80	13.43

TRIANGULAR & ROUND CASED CANE

Triangular cane may be used for stems, etc. in goblets. The triangular shape gives an interesting "cork screw" effect when twisted. Great for icicle ornaments.

CODE	ITEM	BASE	5+	Price per Pound			CASE
				10+	20+	40+	
L-070-80	Clear w/ Blue Thread Triangle	18.65	17.71	16.78	15.85	14.92	12.68
L-080-80	Clear Triangle	11.99	11.39	10.79	10.19	9.59	8.15
L-090-80	Solid Blue	11.99	11.39	10.79	10.19	9.59	8.15
L-110-80	Clear w/ White Thread Triangle	18.65	17.71	16.78	15.85	14.92	12.68
L-120-80	Clear w/ Yellow Thread Triangle	18.65	17.71	16.78	15.85	14.92	12.68
L-130-80	Clear w/ Red Thread Triangle	18.65	17.71	16.78	15.85	14.92	12.68
L-340-80	Aquamarine w/2 White Thread	19.75	18.76	17.77	16.78	15.80	13.43
L-350-80	Aqua w/2 White Threads	19.75	18.76	17.77	16.78	15.80	13.43
L-450-80	Clear w/ Violet Thread Round	19.75	18.76	17.77	16.78	15.80	13.43

STRIPED CANE

CODE	ITEM	BASE	5+	Price per Pound			CASE
				10+	20+	40+	
L-370-80	Opal Green Stripes on Clear	44.00	41.80	39.60	37.40	35.20	29.92
L-480-80	Black Stripes on Light Amber	41.80	39.71	37.62	35.53	33.44	28.42
L-470-80	Opal White Stripes on Clear	41.80	39.71	37.62	35.53	33.44	28.42

SOFT GLASS TUBING

LAUSCHA TUBES- HAND PULLED

(Available in 8-10, 10-12, 20-30 and 30-40mm Diameters. Tubes are approx 60" long. 8mm, 20mm and 30mm tubes weight approx .20Lbs, .75Lbs and 1.5Lb respectively) Wall thickness 8-10=1mm, 10-12mm=1mm, 20-30=1.5mm, 30-40=2.0mm

CODE	ITEM	BASE	10+	Price per Pound			
				25+	50+	100+	200+
L-500	Light Grass Green Transparent	24.20	22.99	21.78	20.57	19.36	16.46
L-501	Clear Tube	15.40	14.63	13.86	13.09	12.32	10.47
L-502	Clear w/Black & Violet Stripes	36.30	34.49	32.67	30.86	29.04	24.68
L-503	Clear w/White Stripes	36.30	34.49	32.67	30.86	29.04	24.68
L-504	Black Opaque	36.30	34.49	32.67	30.86	29.04	24.68
L-510	Sky Blue Opaque	30.80	29.26	27.72	26.18	26.64	20.94
L-520	Green Opaque Stripes on Clear	36.30	34.49	32.67	30.86	29.04	24.68
L-530	Green w/ Black Stripes on Clear	36.30	34.49	32.67	30.86	29.04	24.68
L-550	Medium Grass Green Trans	24.20	22.99	21.78	20.57	19.36	16.46
L-551	Green Trans w/Copper	24.20	22.99	21.78	20.57	19.36	16.46
L-560	Red Transparent	29.70	28.22	26.73	25.25	23.76	20.20
L-570	Cobalt Blue Transparent	24.20	22.99	21.78	20.57	19.36	16.46
L-571	Blue Opaque	30.80	29.26	27.72	26.18	24.64	20.94
L-580	Reddish Orange Transparent	29.70	28.22	26.73	25.52	23.76	20.20
L-581	Red/Orange Trans	29.70	28.22	26.73	25.25	23.76	20.20
L-590	White Opaque	30.80	29.26	27.72	26.18	24.64	20.94
L-595	Yellow Opaque	29.70	28.22	26.73	25.25	23.76	20.20
L-596	Yellow Neon Tube	27.50	26.13	24.75	23.38	22.00	18.70
L-597	Pink Opaque STRIKES	39.60	37.62	35.64	33.66	31.68	26.93
L-598	Clear with Blue & White	36.30	34.49	32.67	30.86	29.04	24.68
L-599	Clear with Orange & White	36.30	34.49	32.67	30.86	29.04	24.68



Lauscha Glass Pens
made with candy canes



Lauscha Icicles
made with triangular cane



Glass Montage pieces
made with Lauscha tubes