

# TRUE BITE DRILL BITS

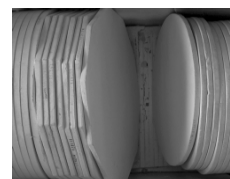
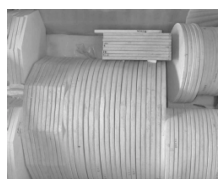
Our new True Bite carbide drill bits are ideal for drilling holes in our slumping molds and glass. Long lasting and clean cutting. Ideally suited for use in Dremel tools, will also work in standard drills.

CODE	ITEM	Price per Piece		
		1+	4+	8+
P-DB-116	True Bite Drill Bit 1/16" dia	12.00	11.40	10.80
P-DB-18	True Bite Drill Bit 1/8" dia	12.00	11.40	10.80
P-DB-332	True Bite Drill Bit 3/32" dia	12.00	11.40	10.80



# KILN SHELVES

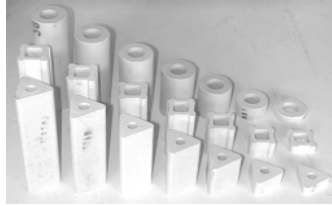
We have a wide variety of kiln shelves to fit almost any kiln. Use our cross reference list\* below to find the shelf you need, or to be absolutely sure, measure the inside dimensions of your kiln, subtract 2" (1" clearance for each side) and select the closest matching size. If you don't find an exact match, select the next smaller size. All shelves may be combined for quantity discounts.



CODE	ITEM	Price per Piece			
		1+	5+	10+	20+
KI-FSOC05	15.5 x 5/8 Octagon	24.20	21.78	20.57	19.36
KI-FSOC10	21 1/8 x 5/8 Octagon	46.20	41.58	39.27	36.96
KI-FSOH15	15.5 x 8 x 5/8 Half Octagon	12.65	11.39	10.75	10.12
KI-FSPO05	26x13x5/8 12 Sided Polygon	35.20	31.68	29.92	28.16
KI-FSPO10	26x13x1 12 Sided Polygon	49.50	44.55	42.08	39.60
KI-FSRE12	8.5" x10"x3/8" Rectangle	15.00	13.50	12.75	12.00
KI-FSRE13	17"x10"x3/8" Rectangle	20.00	18.00	17.00	16.00
KI-FSRE15	15 x 10 x 3/8 Rectangle	19.80	17.82	16.83	15.84
KI-FSRE20	21 x 15 x 3/4 Rectangle	33.66	30.29	28.61	26.93
KI-FSRE25	24"x12"x 1" Rectangle	37.80	34.02	32.13	30.24
KI-FSRH05	20 x 10 x 3/4 Half Round	22.28	20.05	18.93	17.82
KI-FSRH10	21 x 10.5 x 3/4 Half Round	23.38	21.04	19.87	18.70
KI-FSRH15	26 x 13 x 3/4 Half Round	34.65	31.19	29.45	27.72
KI-FSRO05	9 x 7/16 Round	10.45	9.41	8.88	8.36
KI-FSRO10	10 1/4 x 7/16 Round	13.20	11.88	11.22	10.56
KI-FSRO15	12 x 5/8 Round	15.40	13.86	13.09	12.32
KI-FSRO20	13 x 5/8 Round	16.50	14.85	14.03	13.20
KI-FSRO25	15 x 5/8 Round	23.10	20.79	19.64	18.48
KI-FSRO30	16 x 5/8 Round	17.82	16.04	15.15	14.26
KI-FSRO35	19 x 5/8 Round	37.40	33.66	31.79	29.92
KI-FSRO45	21 x 3/4 Round	46.20	41.58	39.27	36.96
KI-FSSQ25	12 x 12 x 1/2 Square	10.89	9.80	9.26	8.71
KI-FSSQ35	20 x 20 x 5/8 Square	36.30	32.67	30.86	29.04
KI-FSSQ40	20 x 20 x 1 Square	53.46	48.11	45.44	42.77
KI-FSSQ45	22 x 22 x 5/8 Square	61.60	55.44	52.36	49.28
KI-FSSQ50	24 x 24 x 5/8 Square	64.35	57.92	54.70	51.48

# SHELF POSTS

We have a variety of shelf posts for supporting kiln shelves, stacking etc. Available in round, square and triangle shapes. All kiln posts may be combined for quantity discounts.

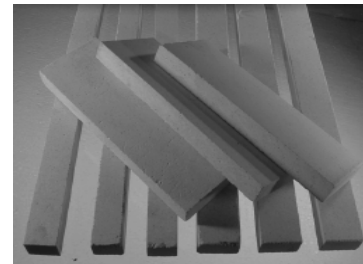


CODE	ITEM	Price per Piece			
		1+	5+	10+	20+
KI-PRO05	2"x1/2" Round .5" Wall	0.94	0.84	0.79	0.75
KI-PRO10	2" x 1" Round .5" Wall	0.99	0.89	0.84	0.79
KI-PRO20	2" x 2" Round .5" Wall	1.16	1.04	0.98	0.92
KI-PRO30	2" x 3" Round .5" Wall	1.60	1.44	1.36	1.28
KI-PRO40	2" x 4" Round .5" Wall	1.82	1.63	1.54	1.45
KI-PRO50	2" x 5" Round .5" Wall	2.15	1.93	1.82	1.72
KI-PRO60	2" x 6" Round .5" Wall	2.48	2.23	2.10	1.98
KI-PSQ05	1.5"x1/2" Square Fluted	0.66	0.59	0.56	0.53
KI-PSQ10	1.5" x 1" Square Fluted	0.72	0.64	0.61	0.57
KI-PSQ20	1.5" x 2" Square Fluted	0.88	0.79	0.75	0.70
KI-PSQ30	1.5" x 3" Square Fluted	1.05	0.94	0.89	0.84
KI-PSQ40	1.5" x 4" Square Fluted	1.43	1.29	1.22	1.14
KI-PSQ50	1.5" x 5" Square Fluted	1.76	1.58	1.50	1.41
KI-PSQ60	1.5" x 6" Square Fluted	2.09	1.88	1.78	1.67
KI-PTR05	1.5"x1/2" Triangle	0.66	0.59	0.56	0.53
KI-PTR10	1.5" x 1" Triangle	0.72	0.64	0.61	0.57
KI-PTR20	1.5" x 2" Triangle	0.88	0.79	0.75	0.70
KI-PTR30	1.5" x 3" Triangle	1.05	0.94	0.89	0.84
KI-PTR40	1.5" x 4" Triangle	1.43	1.29	1.22	1.14
KI-PTR50	1.5" x 5" Triangle	1.76	1.58	1.50	1.41
KI-PTR60	1.5" x 6" Triangle	2.09	1.88	1.78	1.67

# FUSING DAMS

Fusing dams for holding larger, thicker fused pieces together. Available in five different sizes at a super price.

CODE	ITEM	1+	Price per Piece		
			6+	12+	24+
KI-FD10	6" x 2" x 1/2" Fusing Dam	4.13	3.71	3.30	2.89
KI-FD20	8" x 2" x 1/2" Fusing Dam	4.95	4.46	3.96	3.47
KI-FD30	10" x 2" x 1/2" Fusing Dam	6.05	5.45	4.84	4.24
KI-FD40	20" x 3/4" x 5/8" Fusing Dam	4.95	4.46	3.96	3.47
KI-FD50	20" x 1" x 5/8" Fusing Dam	6.33	5.69	5.06	4.43



# FIRE BRICK

Use as replacement bricks for kilns or use in conjunction with fusing dams above. K25 fire brick rated to 2500°F.

Code	Item	Price
KI-BR1	Fire Brick 2.5"x4.5"x9" K25	8.00
KI-BR4	Fire Brick 3.0"x4.5"x9" K25	10.00

